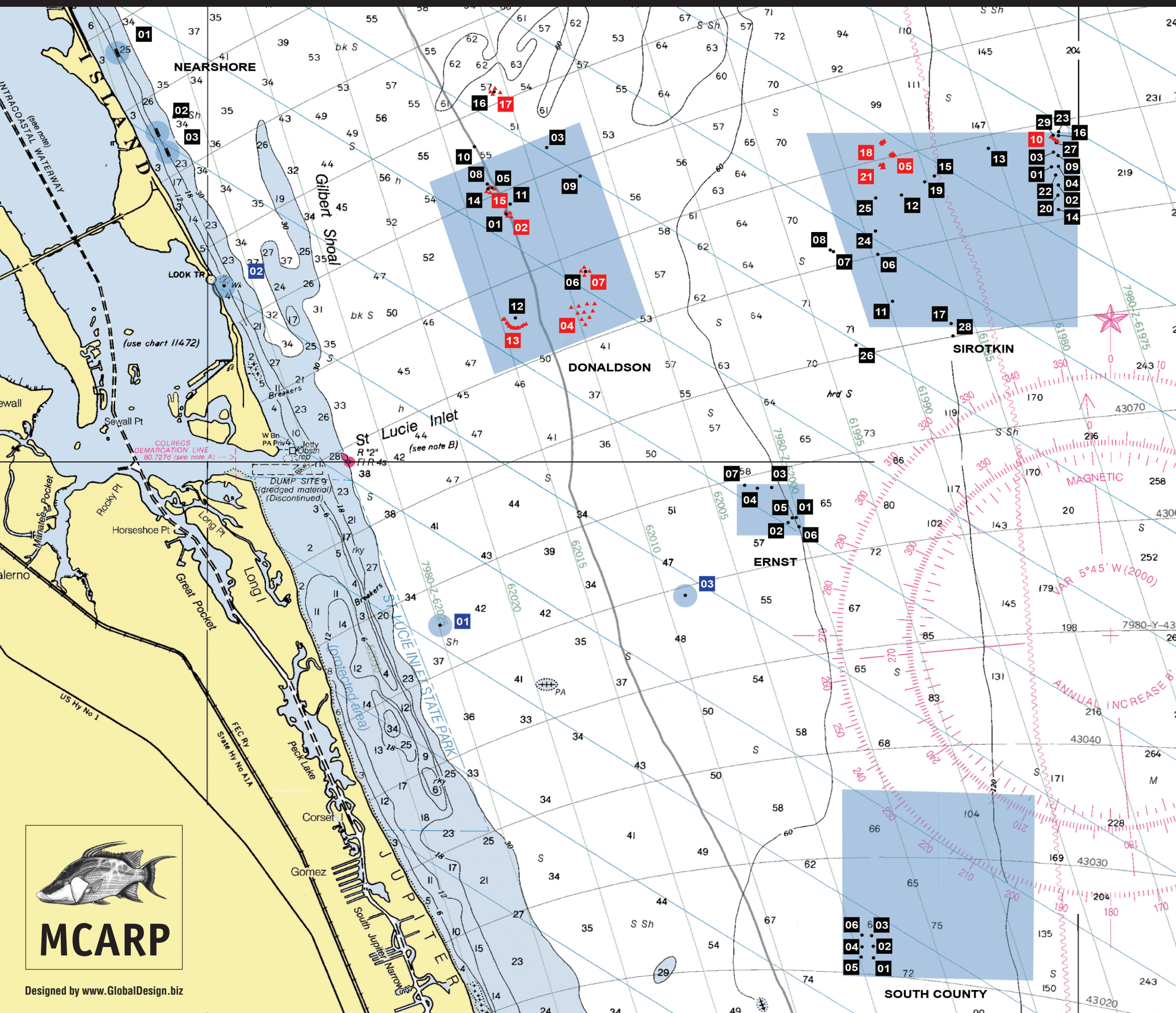


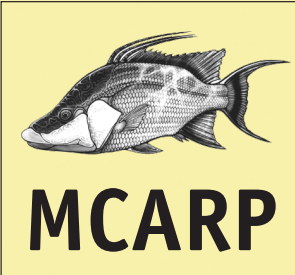
# artificial reef location chart

Martin County Artificial Reef Program



REEF NAME	LATITUDE N	LONGITUDE W	WATER DEPTH (FT)	DEPTH TO STRUCTURE (FT)	DISTANCE-ST. LUCIE INLET
<b>DONALDSON</b>					
01 Cement Barge	27° 12.639'	80° 06.598'	61	52	3.1 nm
02 Cement Barge - Reefmakers (4) *	27° 12.639'	80° 06.598'	60	50	3.1 nm
03 Clifton Perry Memorial Reef	27° 13.352'	80° 06.131'	67	40	4.0 nm
04 Donaldson Triangle - Reefmaker	27° 11.695'	80° 05.716'	50	40	2.9 nm
05 Guardian Reef	27° 12.913'	80° 06.750'	60	52	3.3 nm
06 Inlet Barge	27° 12.019'	80° 05.687'	58	49	3.1 nm
07 Inlet Barge - Reefmakers (4) *	27° 12.019'	80° 05.687'	60	50	3.1 nm
08 LC-6	27° 12.959'	80° 06.803'	61	50	3.3 nm
09 PCL Shallow (Lyons Bridge)	27° 13.045'	80° 05.743'	60	41	3.9 nm
10 Pipe Barge	27° 13.364'	80° 06.959'	62	42	3.6 nm
11 The Owl	27° 12.745'	80° 06.546'	63	53	3.2 nm
12 The Texas Reef	27° 11.522'	80° 06.489'	55	29	2.3 nm
13 The Texas Reef - Reefmakers (15)	27° 11.414'	80° 06.523'	50	40	2.2 nm
14 Traffic Barge	27° 12.907'	80° 06.800'	58	46	3.2 nm
15 Traffic Barge - Reefmakers (4) *	27° 12.907'	80° 06.800'	60	50	3.2 nm
16 Upside-Down Barge	27° 13.948'	80° 06.715'	65	52	4.2 nm
17 Upside-Down Barge - Reefmakers (4) *	27° 13.948'	80° 06.715'	60	50	4.2 nm
<b>SIROTKIN</b>					
01 American Custom Yachts Tower	27° 13.148'	80° 00.338'	178	143	7.8 nm
02 Ballantrae Anglers	27° 12.936'	80° 00.280'	187	181	7.9 nm
03 Baratta Sight-Sea-Er Tower	27° 13.301'	80° 00.307'	180	155	7.9 nm
04 Bausch American Towers Tower	27° 13.152'	80° 00.259'	182	147	7.9 nm
05 Center Patch - Reefmakers (5)	27° 13.276'	80° 02.165'	105	95	6.4 nm
06 Concrete RR Tie Stack	27° 12.201'	80° 02.310'	93	73	5.9 nm
07 David-T	27° 12.229'	80° 02.816'	82	65	5.5 nm
08 Draga-de-Arena	27° 12.253'	80° 02.870'	80	64	5.4 nm
09 Debbie Schmidt Tower	27° 13.277'	80° 00.266'	180	145	8.0 nm
10 Eastern Corridor - Reefmakers (4)	27° 13.419'	80° 00.260'	190	180	8.0 nm
11 Five Peaks Reef (5)	27° 11.701'	80° 02.140'	99	90	5.8 nm
12 FPL Reef/Roosevelt Bridge	27° 12.850'	80° 02.035'	100	85	6.3 nm
13 Frances Langford Memorial	27° 13.353'	80° 01.046'	150	132	7.4 nm
14 Glasrud (BIG AL Tug)	27° 12.698'	80° 00.259'	187	145	7.9 nm
15 Halloween Barge	27° 13.048'	80° 01.672'	122	112	6.7 nm
16 High Queen & Zeppo	27° 13.489'	80° 00.257'	190	175	8.1 nm
17 KD Select	27° 11.476'	80° 01.474'	124	113	6.3 nm
18 North Patch - Reefmakers (5)	27° 13.410'	80° 02.280'	100	90	6.4 nm
19 PCL Deep (Lyons Bridge)	27° 12.924'	80° 01.774'	120	104	6.6 nm
20 Pirate's Cove	27° 12.814'	80° 00.289'	187	174	7.9 nm
21 South Patch - Reefmakers (5)	27° 13.166'	80° 02.284'	100	90	6.3 nm
22 Stuart Corinthian Y.C.	27° 13.040'	80° 00.306'	185	175	7.9 nm
23 Tension Barge	27° 13.527'	80° 00.261'	190	178	8.1 nm
24 Tetrahedron Patch	27° 12.465'	80° 02.341'	95	88	5.9 nm
25 Tetrahedron Stack	27° 12.814'	80° 02.329'	100	91	6.1 nm
26 Titan Tug	27° 11.230'	80° 02.570'	80	64	5.3 nm
27 Tree Barge	27° 13.419'	80° 00.280'	190	176	8.0 nm
28 USS Rankin Navy Ship	27° 11.333'	80° 01.431'	135	75	6.4 nm
29 Wickstrom Ship	27° 13.492'	80° 00.318'	188	117	8.0 nm
<b>ERNST</b>					
01 Corner Barge	27° 09.399'	80° 03.256'	75	63	4.6 nm
02 Evans-Crary Bridge Pile	27° 09.346'	80° 03.368'	75	49	4.5 nm
03 Grand Teton	27° 09.708'	80° 03.535'	62	34	4.3 nm
04 Mango Reef	27° 09.702'	80° 03.702'	61	48	4.2 nm
05 North Barge	27° 09.395'	80° 03.312'	68	57	4.6 nm
06 South Barge	27° 09.312'	80° 03.200'	77	64	4.7 nm
07 West 400	27° 09.735'	80° 03.856'	62	46	4.1 nm
<b>NEARSHORE</b>					
01 Nearshore A (Beachwalk Pasley - 1050 ft)	27° 14.412'	80° 11.098'	16-20	7	5.0 nm
02 Nearshore B (Tiger Shores - 820 ft)	27° 13.533'	80° 10.647'	18-22	8	4.1 nm
03 Nearshore C (Tiger Shores - 920 ft)	27° 13.335'	80° 10.513'	18-22	9	3.8 nm
<b>SOUTH COUNTY</b>					
01 Ann Marie Reef	27° 04.657'	80° 02.297'	69	59	7.6 nm
02 Fogel Capital Management Reef	27° 04.773'	80° 02.297'	70	60	7.6 nm
03 Jack MacDonald Reef	27° 04.885'	80° 02.314'	70	59	7.5 nm
04 Lentine Reef	27° 04.769'	80° 02.423'	69	62	7.5 nm
05 Shirley Reef	27° 04.663'	80° 02.440'	68	61	7.5 nm
06 The Heap	27° 04.888'	80° 02.430'	68	63	7.4 nm
<b>OTHER REEFS</b>					
01 Bull Shark Barge	27° 08.233'	80° 07.344'	45	35	2.0 nm
02 George's Valentine (House of Refuge)	27° 11.880'	80° 09.800'	18	9	2.3 nm
03 Shrimper Boat (Wreck)	27° 08.559'	80° 04.541'	50	40	3.7 nm

\* Reefmaker units form a perimeter round corresponding reef location  
St Lucie Inlet GPS location: N 27 10.000' - W 80 08.400'



Designed by www.GlobalDesign.biz